



| Experience Seaside... Hestia Villas phase B & C



## Project Info

**Total Villas:** 13

**Type:** Detached Villas

**Total Internal Area:** From 123m<sup>2</sup> to 128m<sup>2</sup>

**Plots Size:** 223m<sup>2</sup> to 361m<sup>2</sup>

**Bedrooms:** 3 & 4

**Bathrooms:** 3 & 4

**Pool:** Private

**Status:** Under Construction



Protaras



2 km

Private  
English School



500 m



55 km



2 km

Paralimni  
Marina







MALAMA BEACH (KALIFI CAFÉ)

Discover the Location

KAPPARIS AMENITIES

AYIA TRIADA BEACH & PORT

355

300m



1KM AWAY NEW YACHT MARINA OF PROTARAS

Data SIO, NOAA, U.S. Navy, NGA, GEBCO  
© 2016 Google

Image © 2016 DigitalGlobe

Google earth

2003

Imagery Date: 5/26/2015 35°02'59.66" N 34°01'19.68" E elev 8 m eye alt 1.24 km



Phase B



Phase C



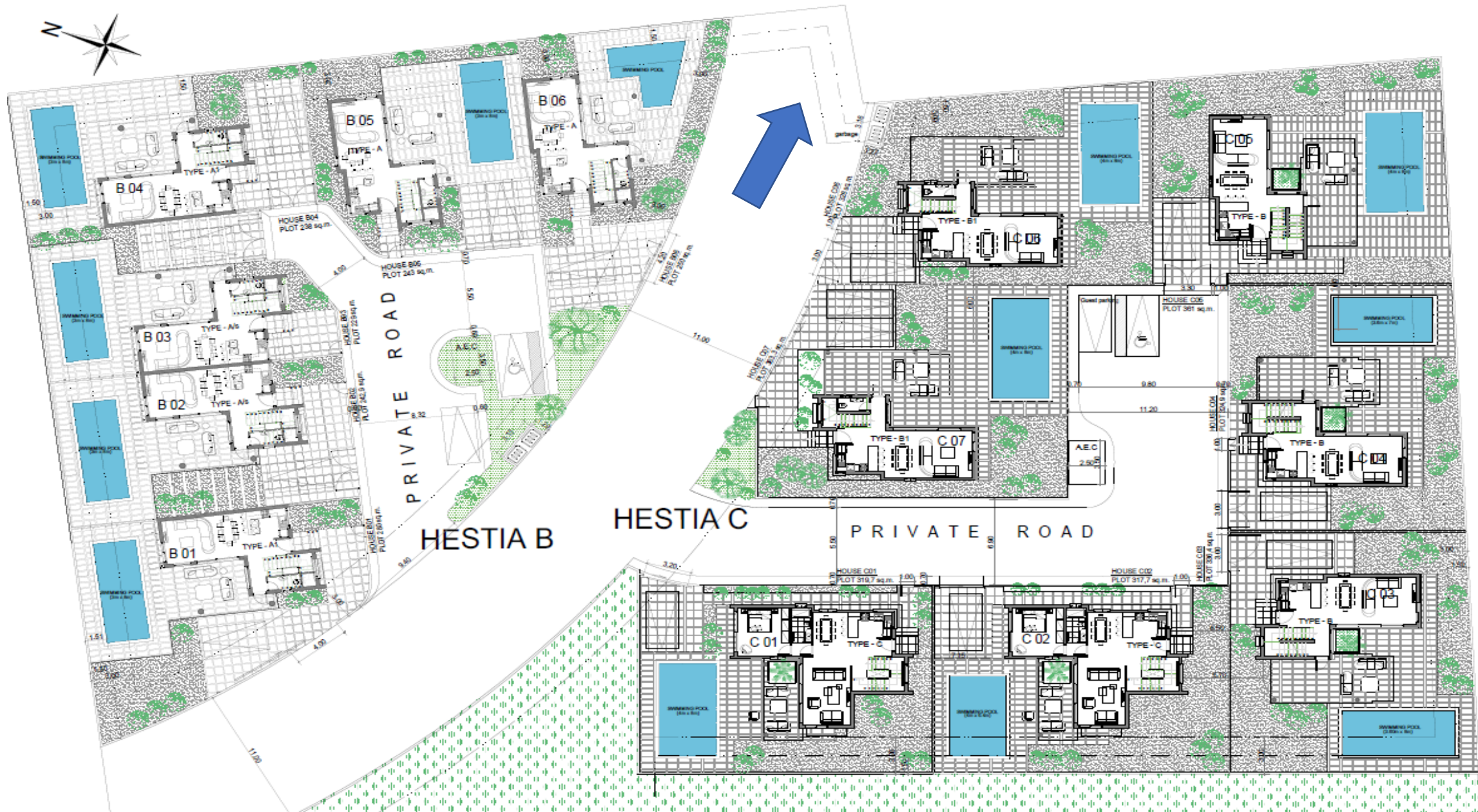
Park





# LAYOUT

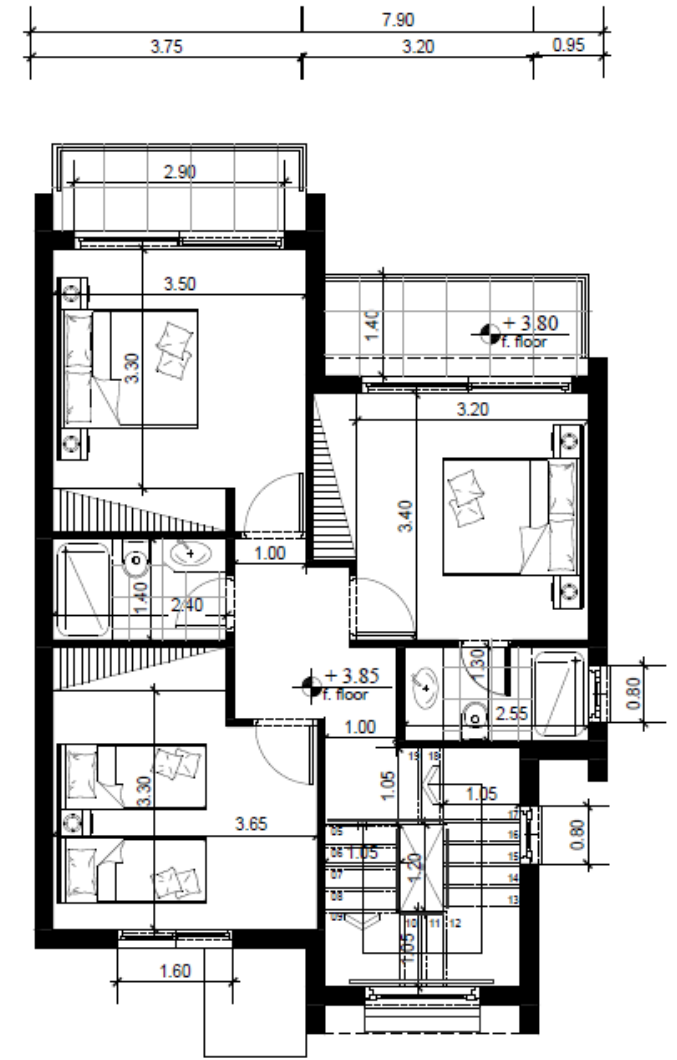
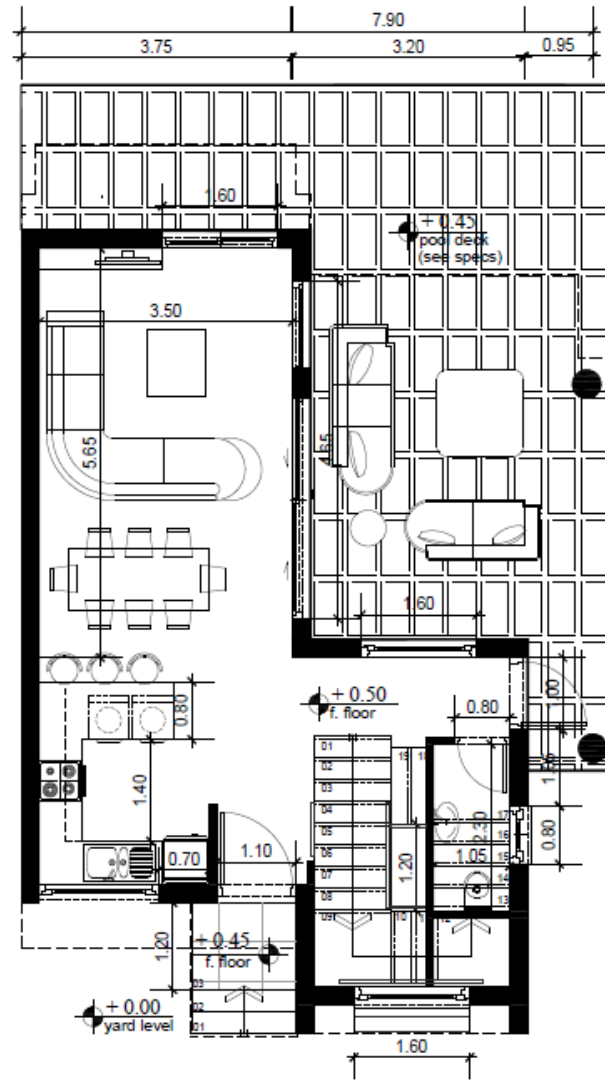
Way to the sea





# VILLA TYPE A1

## PLANS

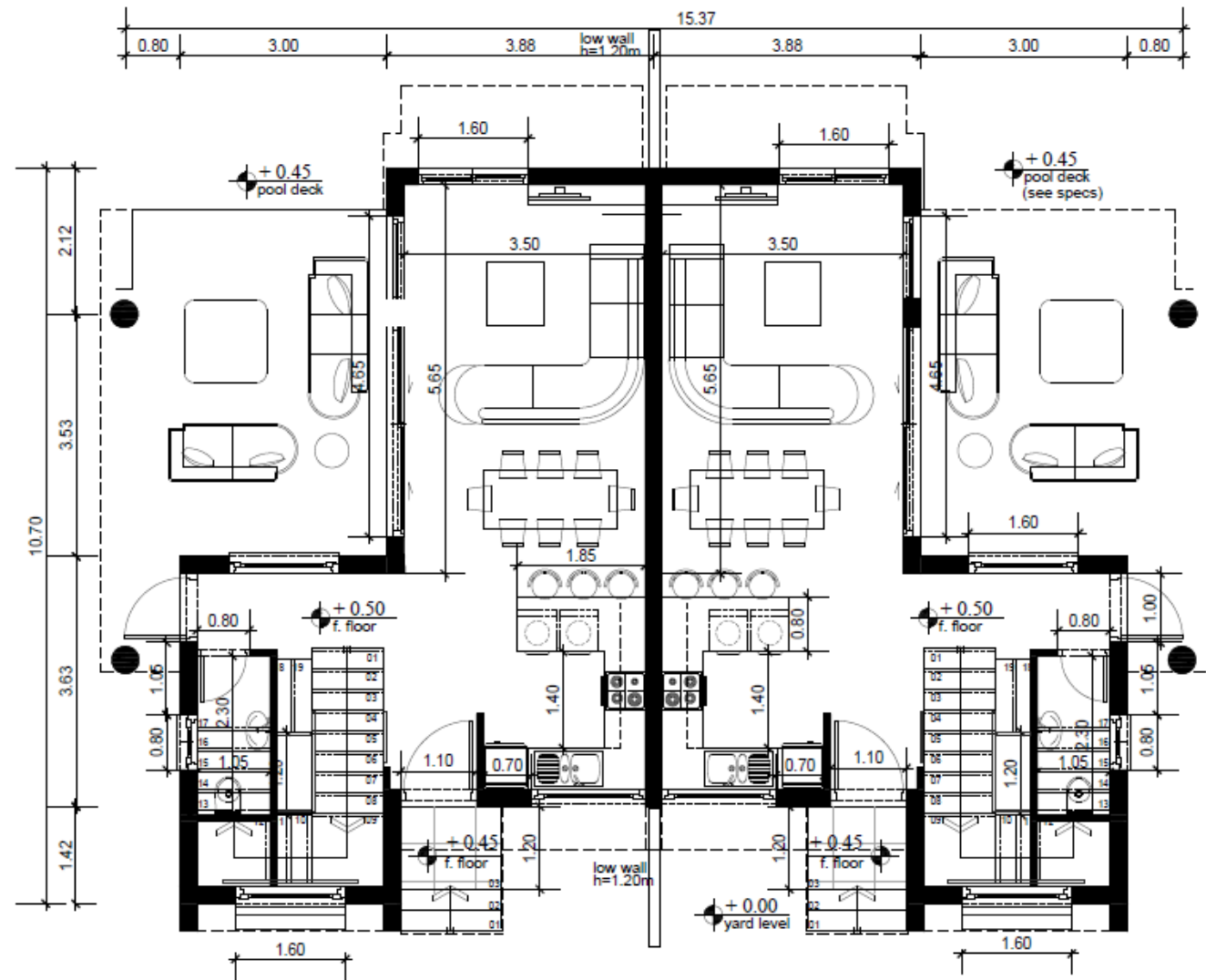


1 First Floor Plan  
scale:1/100



# VILLA TYPE A<sub>s</sub>

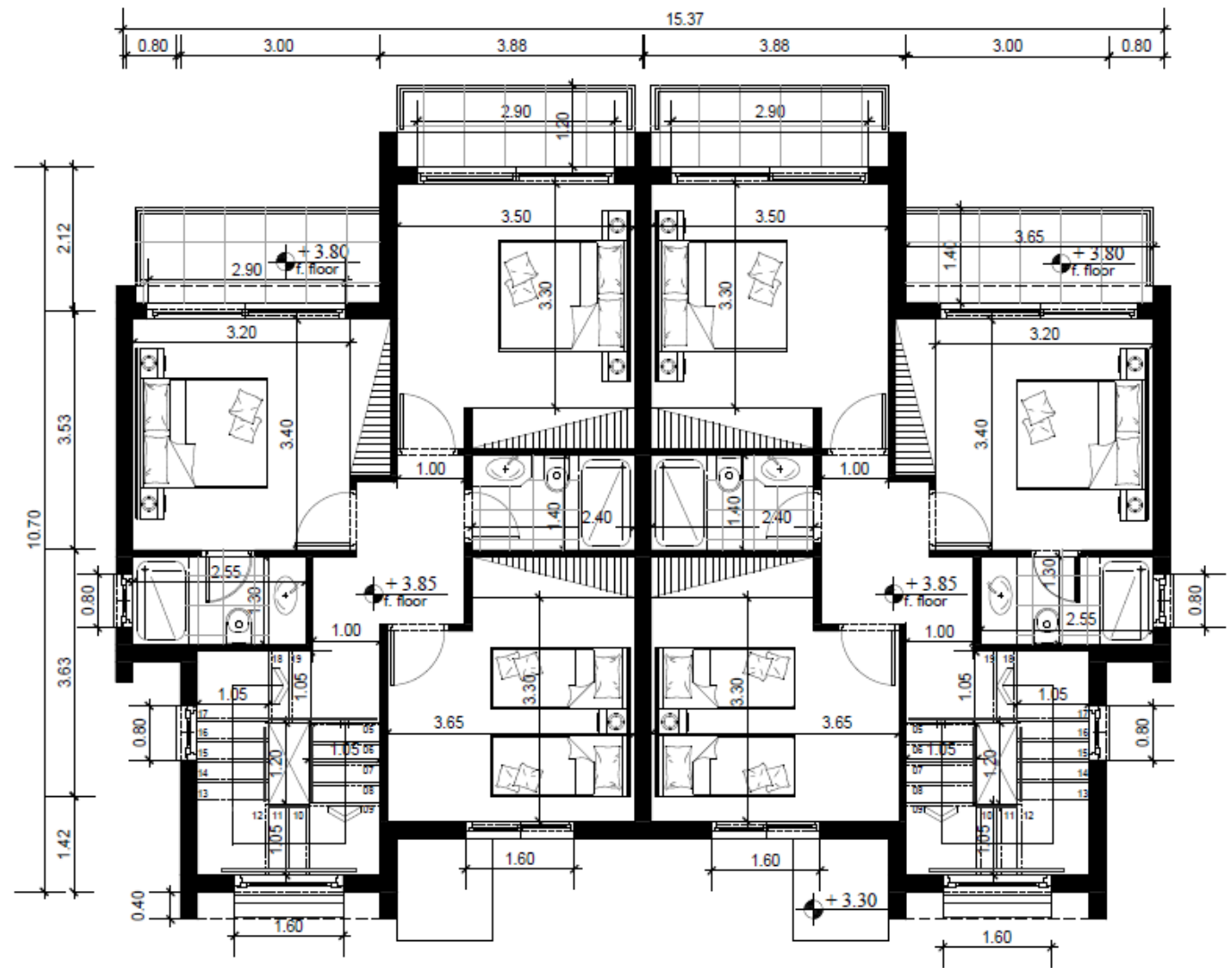
## PLANS



1 Ground Floor Plan  
scale:1/100



# PLANS



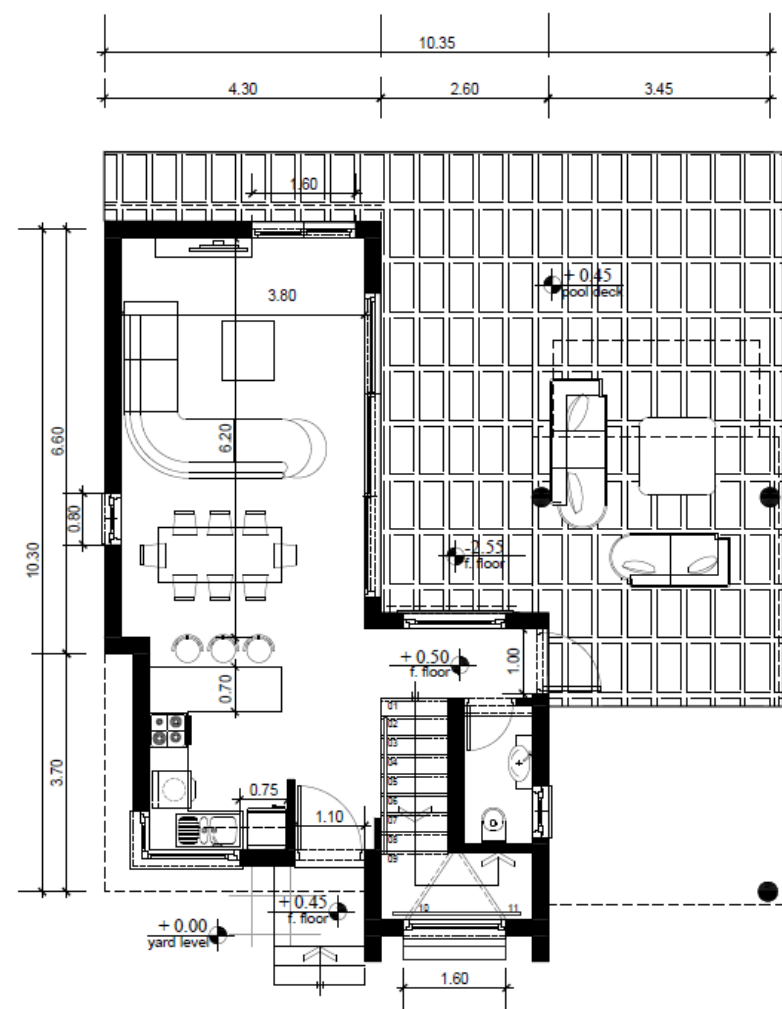
1 First Floor Plan  
scale:1/100



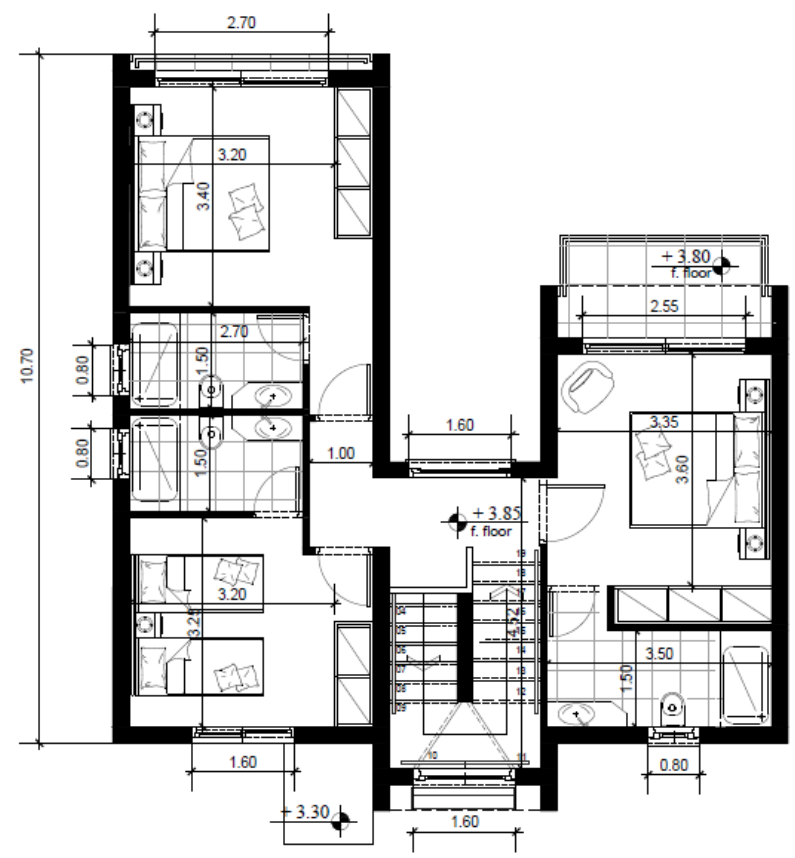


# VILLA TYPE B

## PLANS



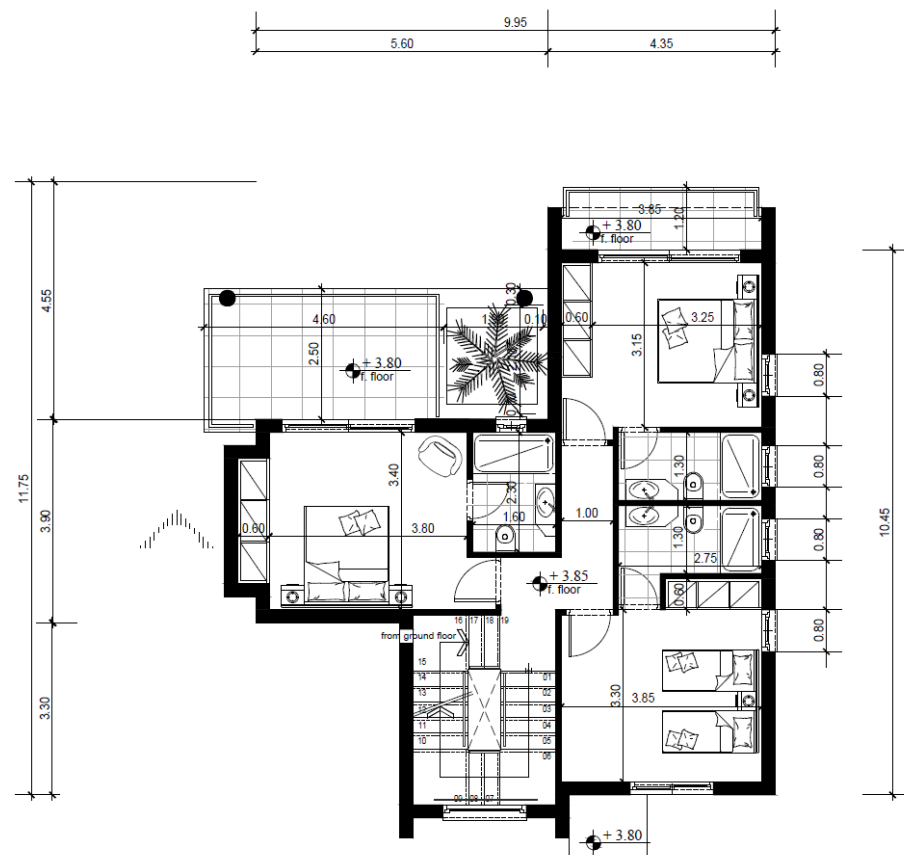
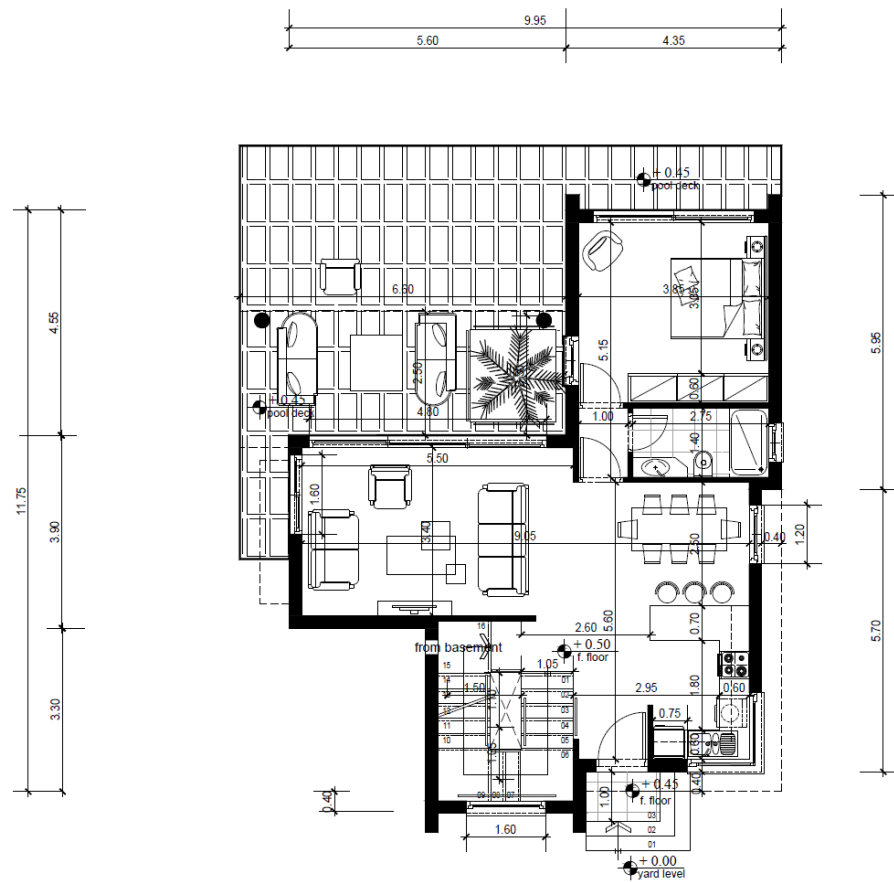
1 Ground Floor Plan  
scale:1/100



2 First Floor Plan  
scale:1/100



# VILLA TYPE C PLANS







## HOUSES INCLUDE:

- Modern Kitchen including Breakfast Bar
- Italian Floors
- Marble Stairs
- En-Suite Bedrooms
- Swimming pool skimmer with mosaic
- Entrance Gate
- High Quality Aluminium Glass



- Thermal Panels on Walls for Higher Energy Efficiency Results
- Private Parking Area
- Provision for Roof Terrace
- Provision for Security, Alarm System
- Provision for Sound System
- Option for Modern movable Fire Place









