



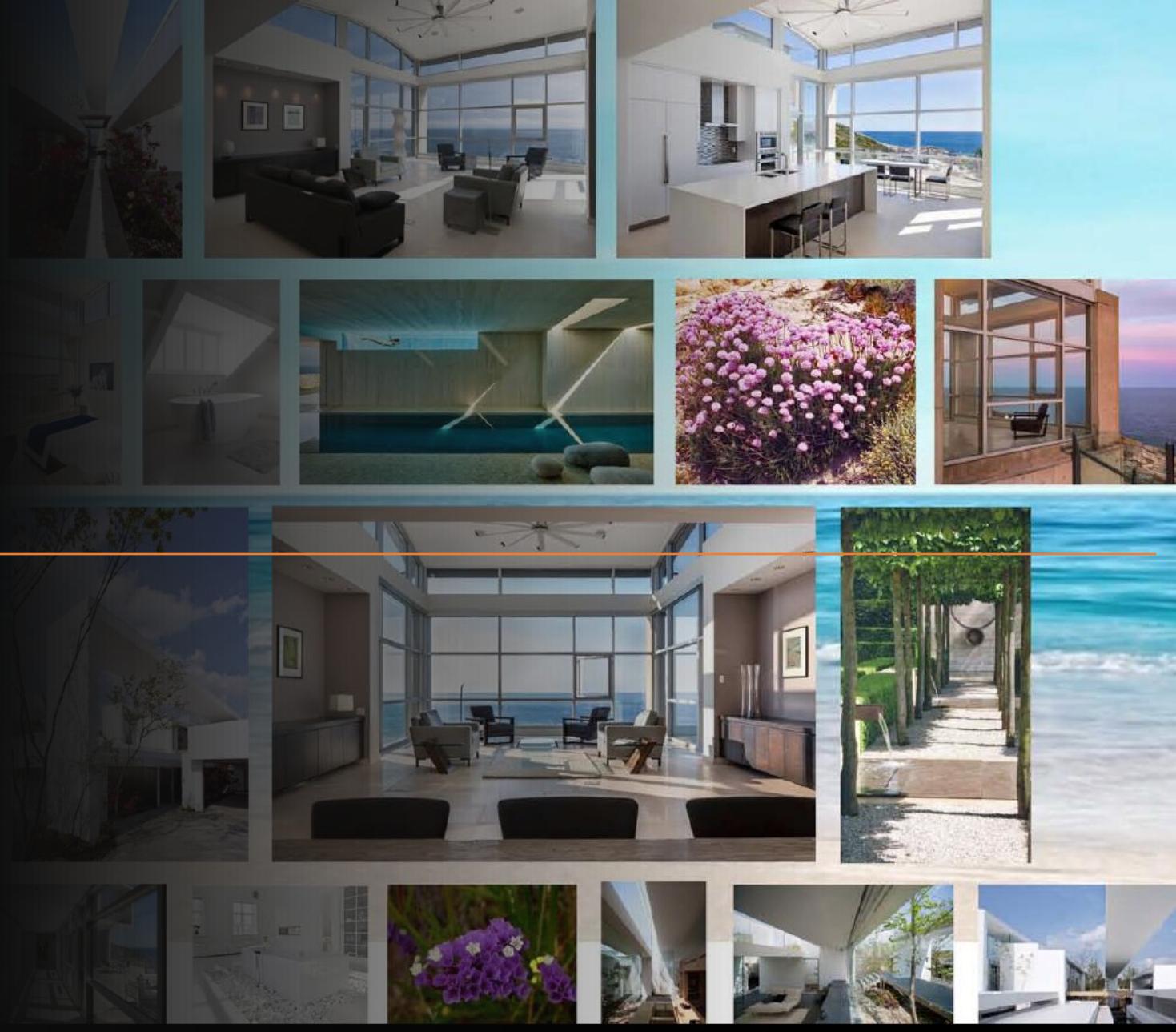
MALAMA Seaview

KAPPARIS – PROTARAS



Modern Oasis

By the Sea



THE CONCEPT

a mix of contrasts, to create a sanctuary into nature and sea

Malama, a project where like-minded people go to relax, revel, and soak up the laid-back holiday and weekend vibes. I found inspiration in the surrounding mediterranean landscape as much as the local nature, from the stones to wood, and from plants to textures.

I want to create a design that feels both cosmopolitan and down-to-earth, to envelop you in soft beauty, full of character and comfort, and surprise with details that may be tiny, but feel like you are located on a luxury retreat. With cozy cocoon-like rooms and vibrant livable areas to relax to throughout the day.







MALAMA SEAVIEW VILLAS


Mythical Sands

MALAMA
BEACH

AYIA TRIADA
HARBOUR

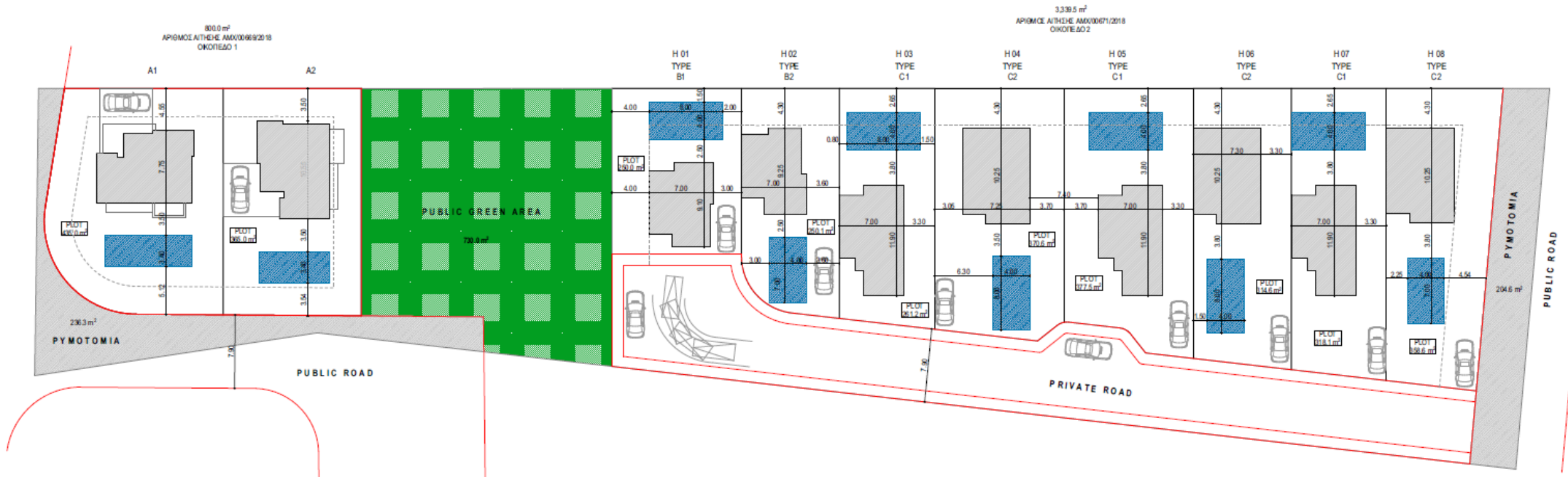
MALAMA BEACH –
KALIFI BEACH BAR

MALAMA VILLAS





Malama MasterPlan

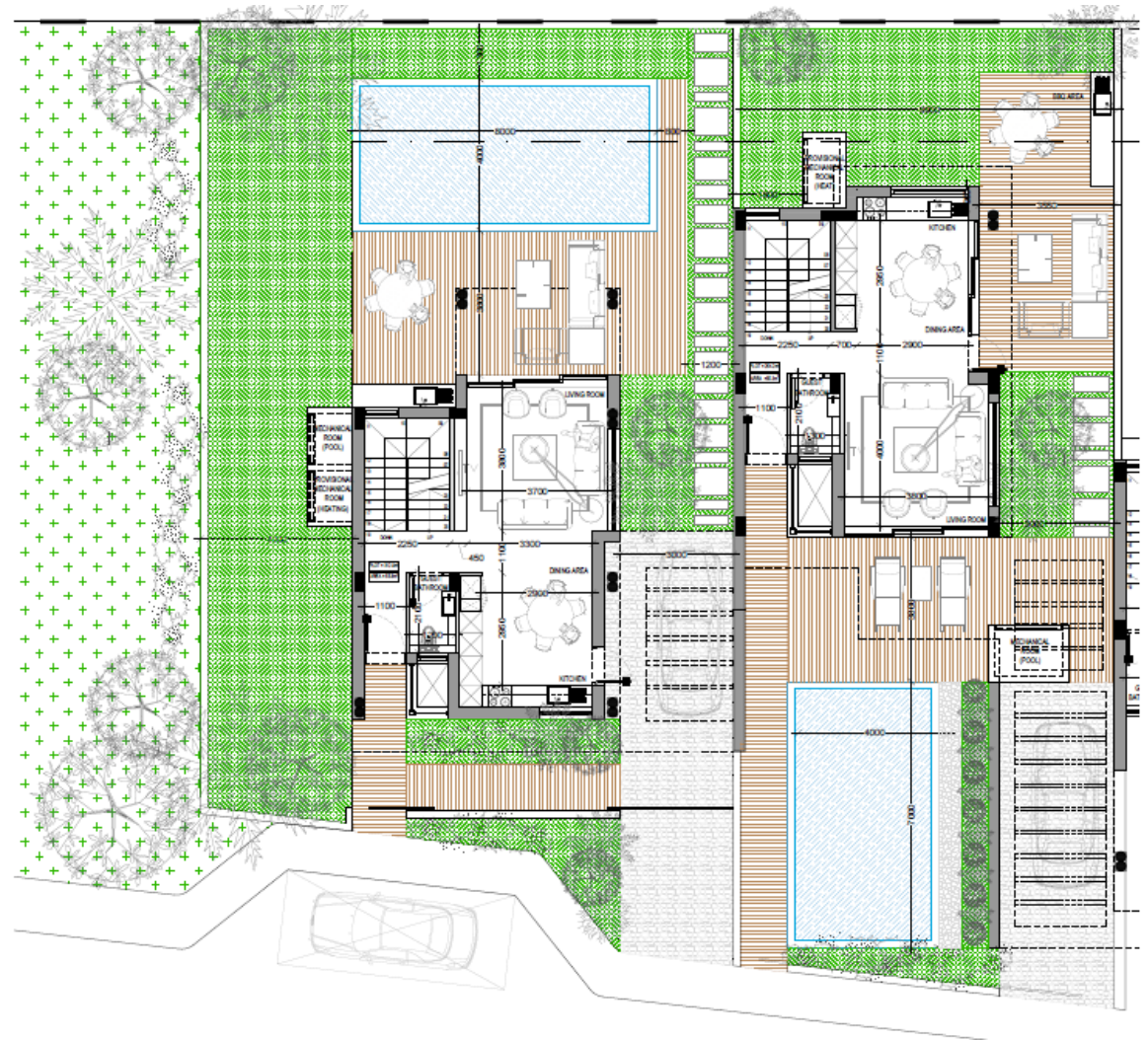


Malama Phase B

10 Unique Designed in such a way so all of them have sea views.

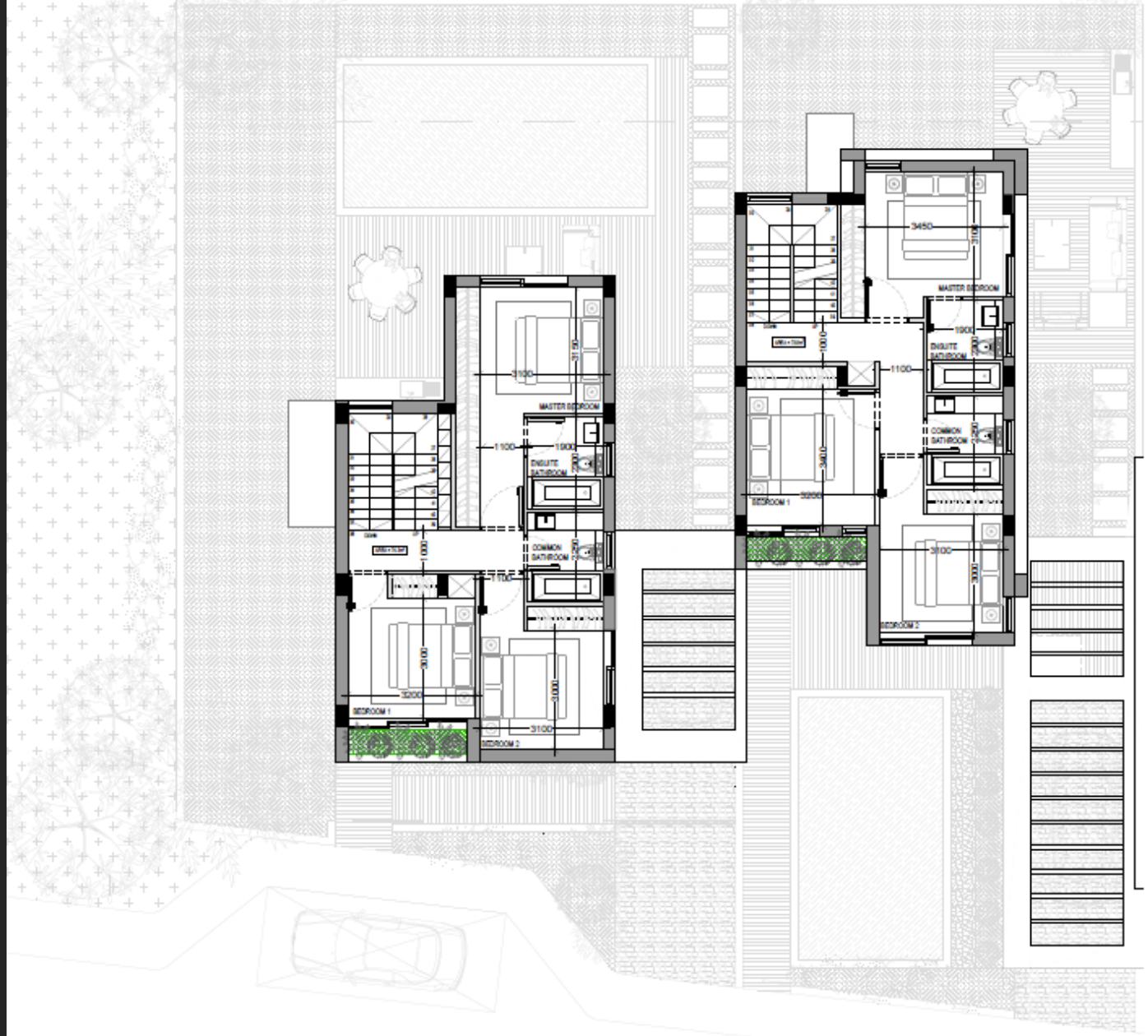
Type B

Ground Floor



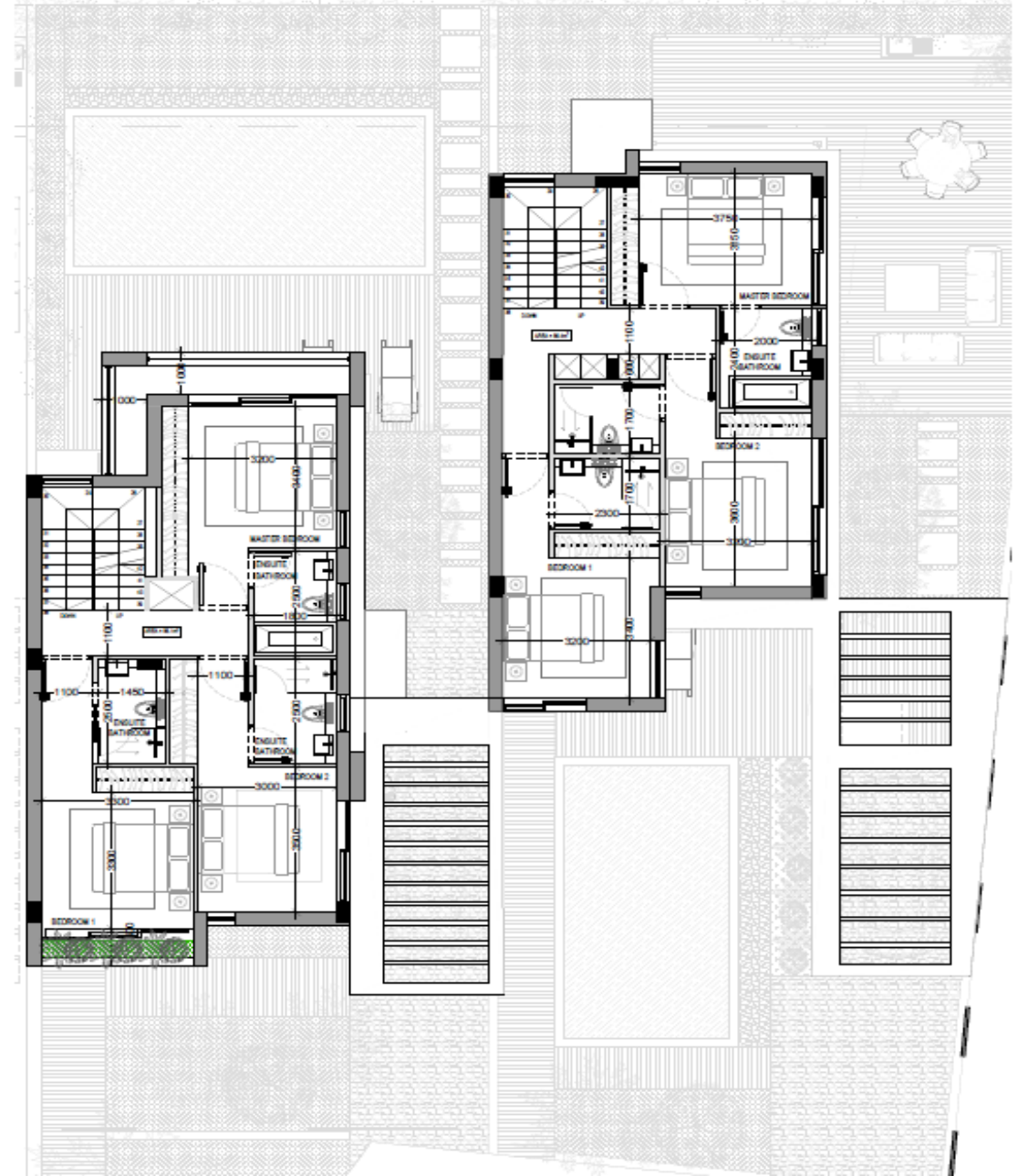
Type B

First Floor



Type C

First Floor



THE MOOD

We will create all rooms with an earthy and private feeling, like a home away from home. Monochrome shades of nature colours will offset the darker nuances of grey stone and wood while raw smooth furnishings and accessories will create a sense of pared back luxury. Décor will be simple and chic, complimented with rattan interiors and neutral linens. Rough textures like stones marbles and wood will meet with smooth fabrics.







Malama Seaview

LOCATION



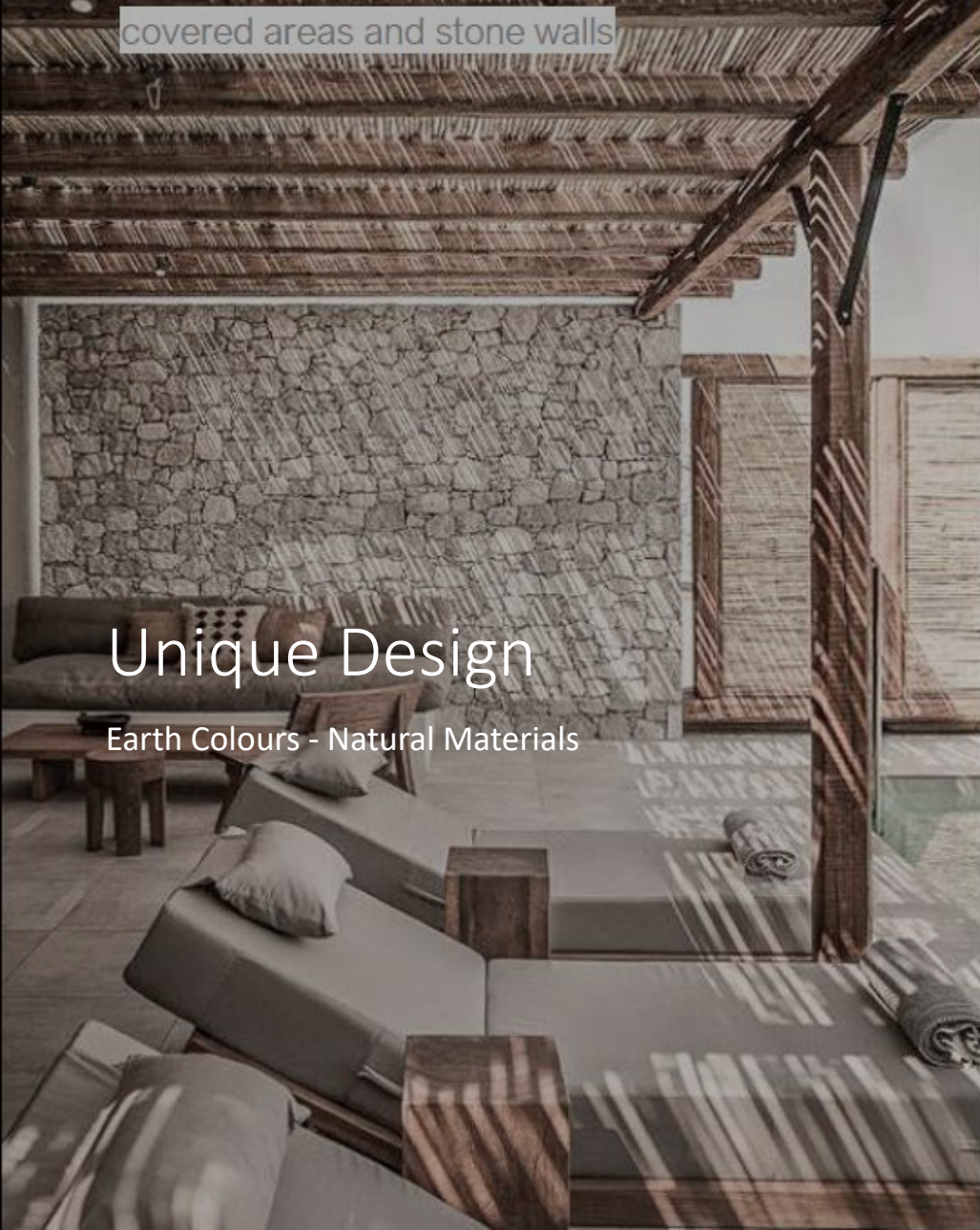
FEATURES

- Size: 138-168m²
- Optional Basement: 50m²
- Plots: 247-487m²
- Bedrooms: 3-4
- Baths: 3 + Guest WC
- Roof Terrace
- Covered Parking
- Gated Development
- Infinity Pool 35m²
- Italian Rectified Ceramics
- Modern Kitchen
- Open Plan Living Areas
- En-suite Bedrooms
- High Ceiling
- Light Design
- Landscaping
- Upgraded Aluminium Windows

covered areas and stone walls

Unique Design

Earth Colours - Natural Materials





Walking Distance
to the most
exquisite Sandy

Beaches on East
Cost

